

BRC Value, Affordability & Flexibility



All Inclusive Luxury Suite Option D

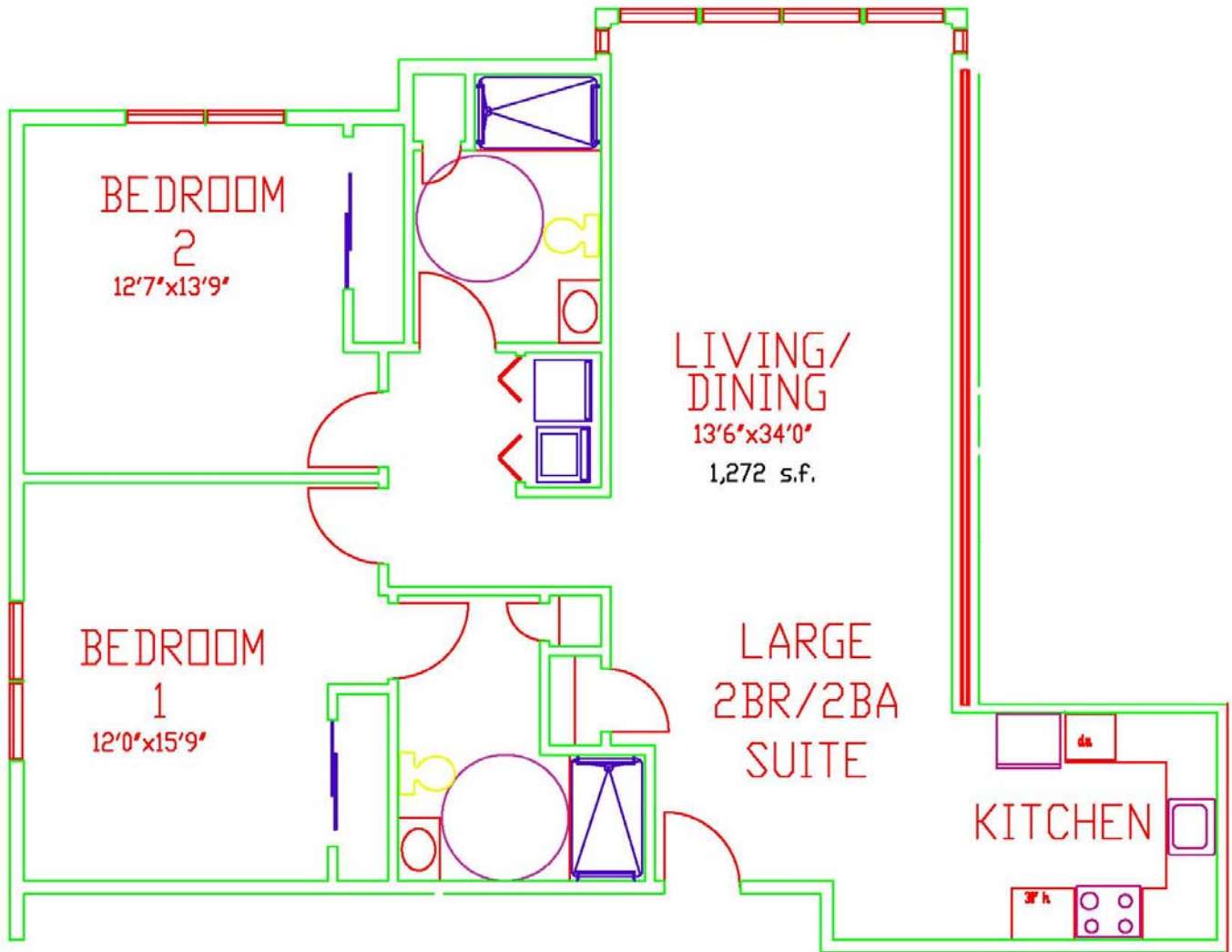
Rental Price List

Luxury Suite Style	Monthly Rent	Monthly Maintenance & Service Package	All Inclusive Monthly Payment
Large 1BR / 1BA Suite (Pg 12)	\$1,533	\$1,215	\$2,748
Deluxe 1BR / 1BA Suite (Pg 13)	\$1,673	\$1,265	\$2,938
Std 2BR / 1BA Suite (Pg 14)	\$1,803	\$1,415	\$3,218
Large 2BR / 2BA Suite (Pg 15)	\$1,952	\$1,450	\$3,402
Deluxe 2BR / 2BA Suite (Pg 16)	\$2,091	\$1,470	\$3,561
Second Person Fee	None	\$350	\$350

Our Luxury Suites offer the most convenience with easy access to the Community Center without going outside and an all inclusive Maintenance & Service Package that includes the following:

- | | | |
|---|---|---|
| ✓ Taxes | ✓ Insurance | ✓ Sewer |
| ✓ Water | ✓ Trash | ✓ All Grounds Care |
| ✓ All Snow Removal (Including Cleaning Off Of Your Car) | ✓ All Maintenance Inside And Outside Of The House | ✓ Our 24 Hour Emergency Response System |
| ✓ An Expandable Meal Program (20 Meals Minimum) | ✓ Cleaning And Linen Service Twice A Month | ✓ All Inclusive Gas, Electric, Phone, Cable TV and Internet Package |

LUXURY SUITE FLOOR PLAN



BEDROOM
2
12'7"x13'9"

LIVING/
DINING
13'6"x34'0"
1,272 s.f.

BEDROOM
1
12'0"x15'9"

LARGE
2BR/2BA
SUITE

KITCHEN

LUXURY SUITE FLOOR PLAN

